



DIGITAL  
INNOVATION  
SUMMIT

DICITAS  
CONSULTING  
PARTNERS IN TRANSFORMATION



# **Building the Digital Ecosystem for Tomorrow**

**Prof. Dr. Ir. Nico Baken  
Fort Voordorp,  
September 24<sup>th</sup>**

## **The cITy Genome**





# Peter Drucker

“The greatest danger in times of turbulence is not the turbulence, it is to act with yesterday's logic”

What is the road(map) then to act well?

Do we really know what is going on in our society!?

Stretch your environment, your “zoësis”!

Build up new knowledge!



The book cover features a dramatic landscape painting. In the foreground, a stone path leads towards a distant mountain range under a sky filled with large, billowing clouds. On the right side of the path, there is a large, muscular statue of Prometheus, bound to a rock. In the background, another smaller statue is visible on a pedestal. The overall tone is somber and epic.

# Ton Lemaire De val van Prometheus

Over de keerzijden van de vooruitgang

**Read?**



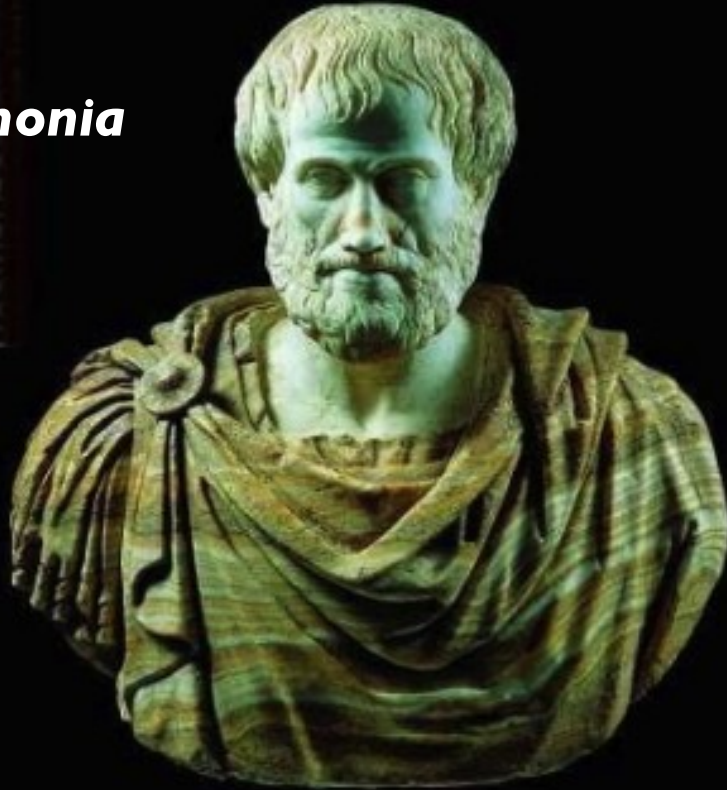
Progress  
that makes **Sense**  
... **Pneuma!**



# The Good Life

## Happiness: *eudaimonia*

1. Enjoy
2. Appreciation
3. Insight



*psychès energeia kat' aretèn*





# Ton Lemaire: what is meaningful progression? What makes no(n) sense or sense...in our sectors?

## Public sector

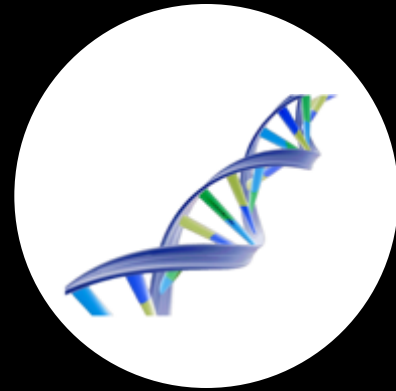
What does good governance mean?  
When is an administration acting meaningful?  
What does this mean for civilians?

## Construction sector

What is good building / smart city?  
What is a meaningful housing corporation?  
What does this mean for tenants?

## Telecom/ICT sector

What is good (tele) communications?  
When is KPN a good and meaningful company?  
What does this mean for employees



Innovate Innovation



1

Introduction

2

Environment  
complex  
world

3

Transition in  
construction  
sector  
Role of ICT

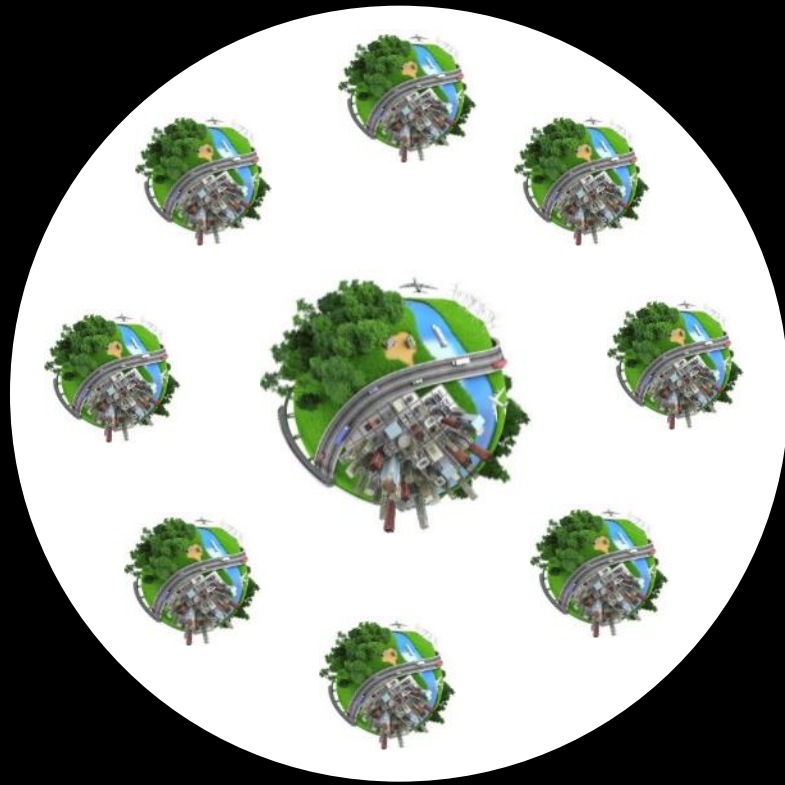
4



5

Challenge!



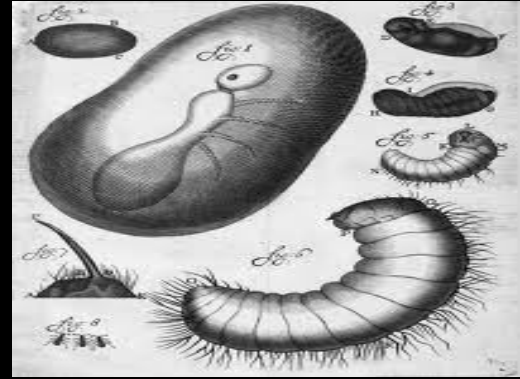
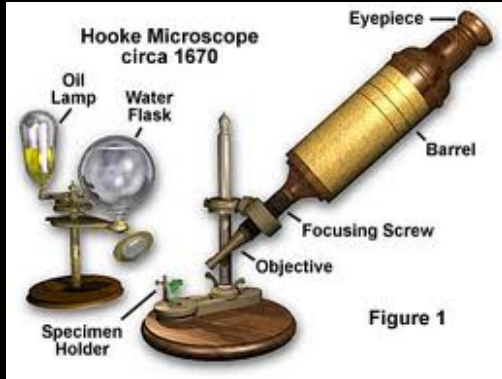


**Suppose you are a IT/Smart-City expert ...  
What do you see in your environment?**

**More IT/Smart-City experts of**



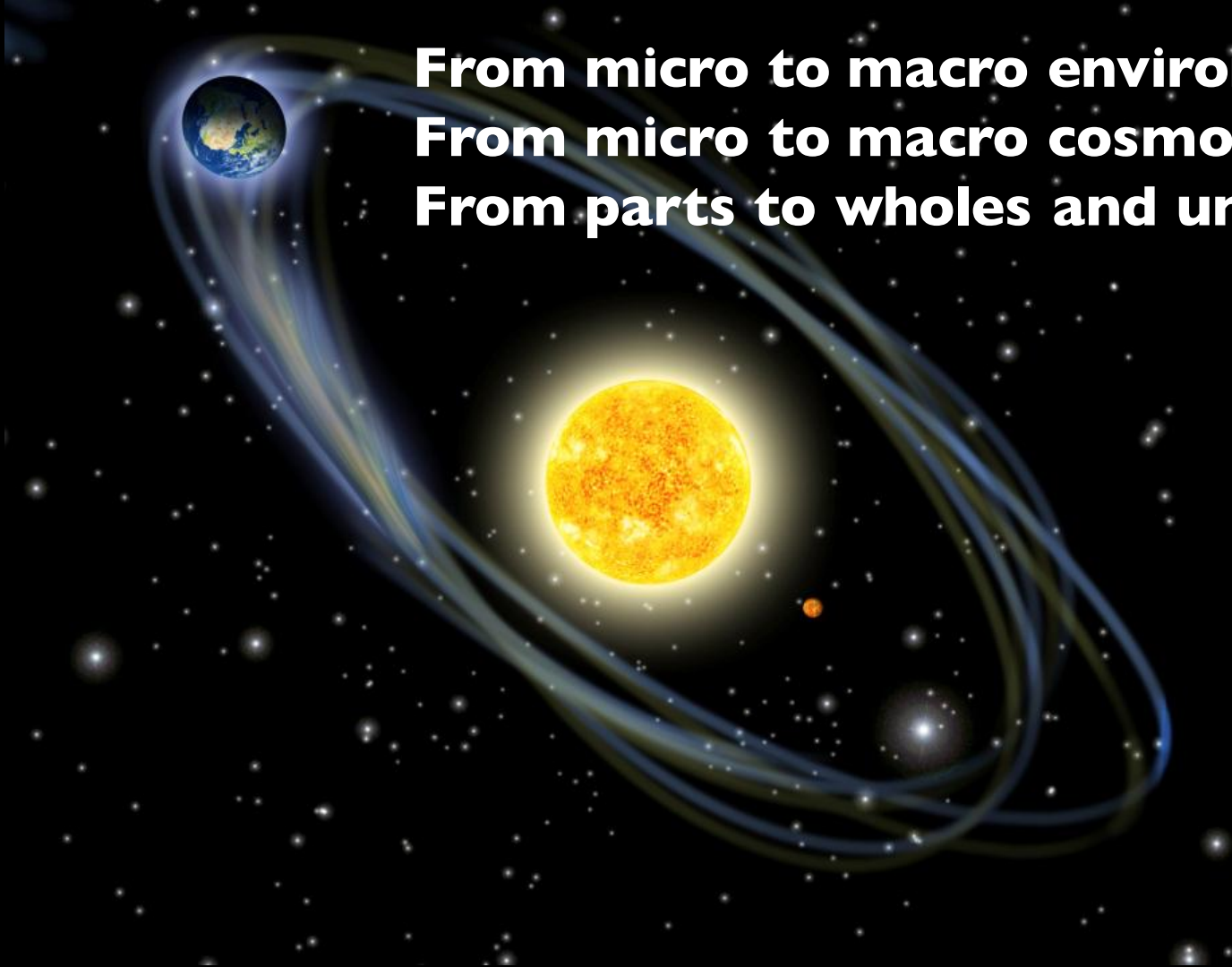
# What do we see in our environment?



Unpretentious<-> Abundance, opportunities



**From micro to macro environment**  
**From micro to macro cosmos**  
**From parts to wholes and universe**





**From micro and macro spatial environment to  
time**





**1 hour = 100,000 years**





The image features a large, dense crowd of people of various ethnicities and ages, packed closely together. They are positioned on the curved horizon of a globe, which is set against a black background filled with numerous small, white stars, suggesting a cosmic or space-themed setting. A large, semi-transparent red and white crosshair is centered over the image. A white rectangular box with a black border is positioned horizontally across the upper part of the crosshair. A small white label with black text is attached to the vertical bar of the crosshair, pointing towards the crowd.

**The last two minutes... humanity**

**7,200,000,000**



## The last two seconds

1967

1970

1980

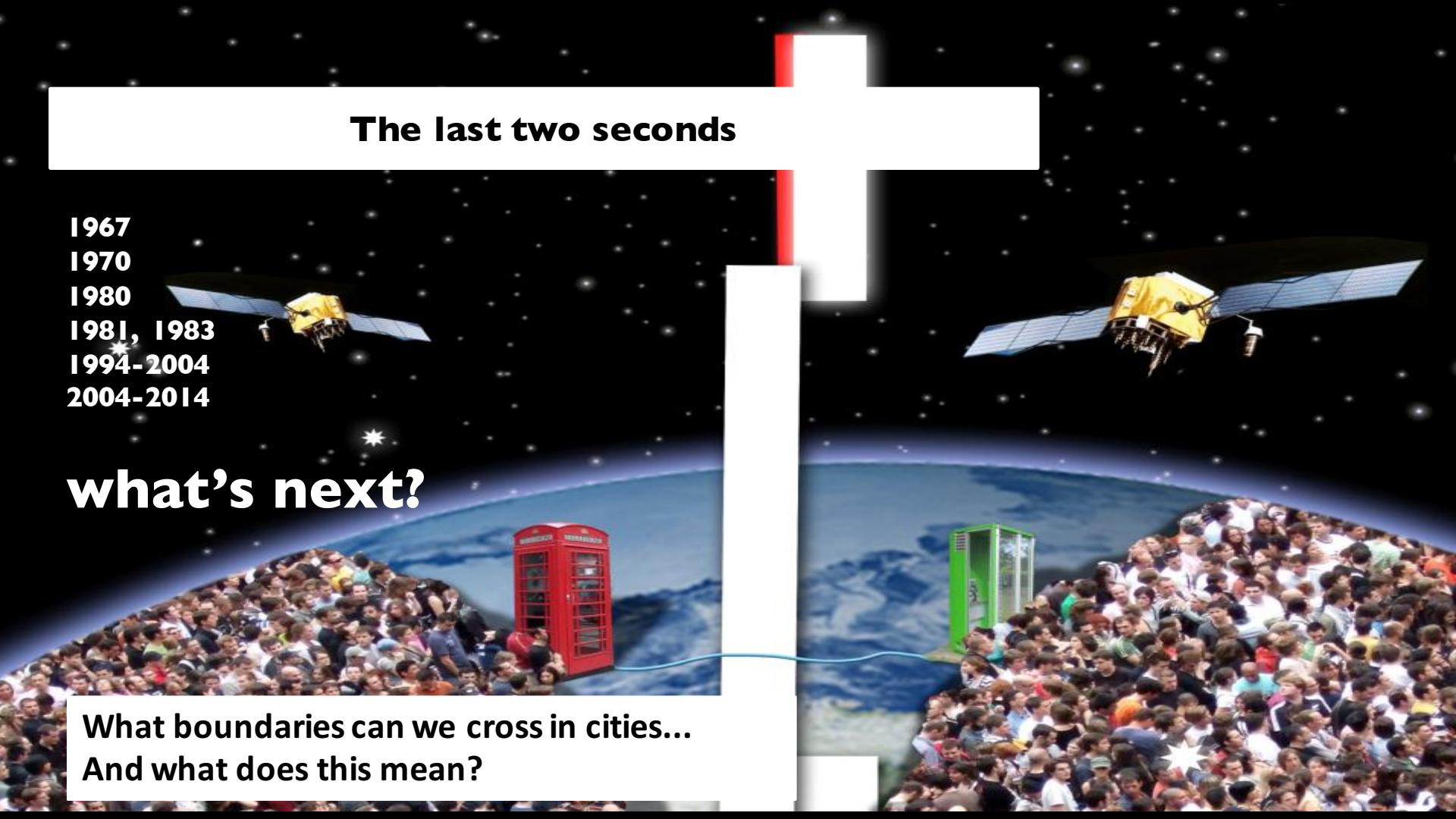
1981, 1983

1994-2004

2004-2014

what's next?

What boundaries can we cross in cities...  
And what does this mean?





# The sector of Health micro- en macro



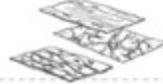
Human being



Systems



Organs



Tissues



Cells



Cell components



DNA



Zeros and ones



# The sector of Healthmicro- en macro



Human being

Systems

Organs

Tissues

Cells

Cell components

DNA

Zeros and ones





a city-hologram generated by the city-genome



# Micro and macro cosmos in construction sector



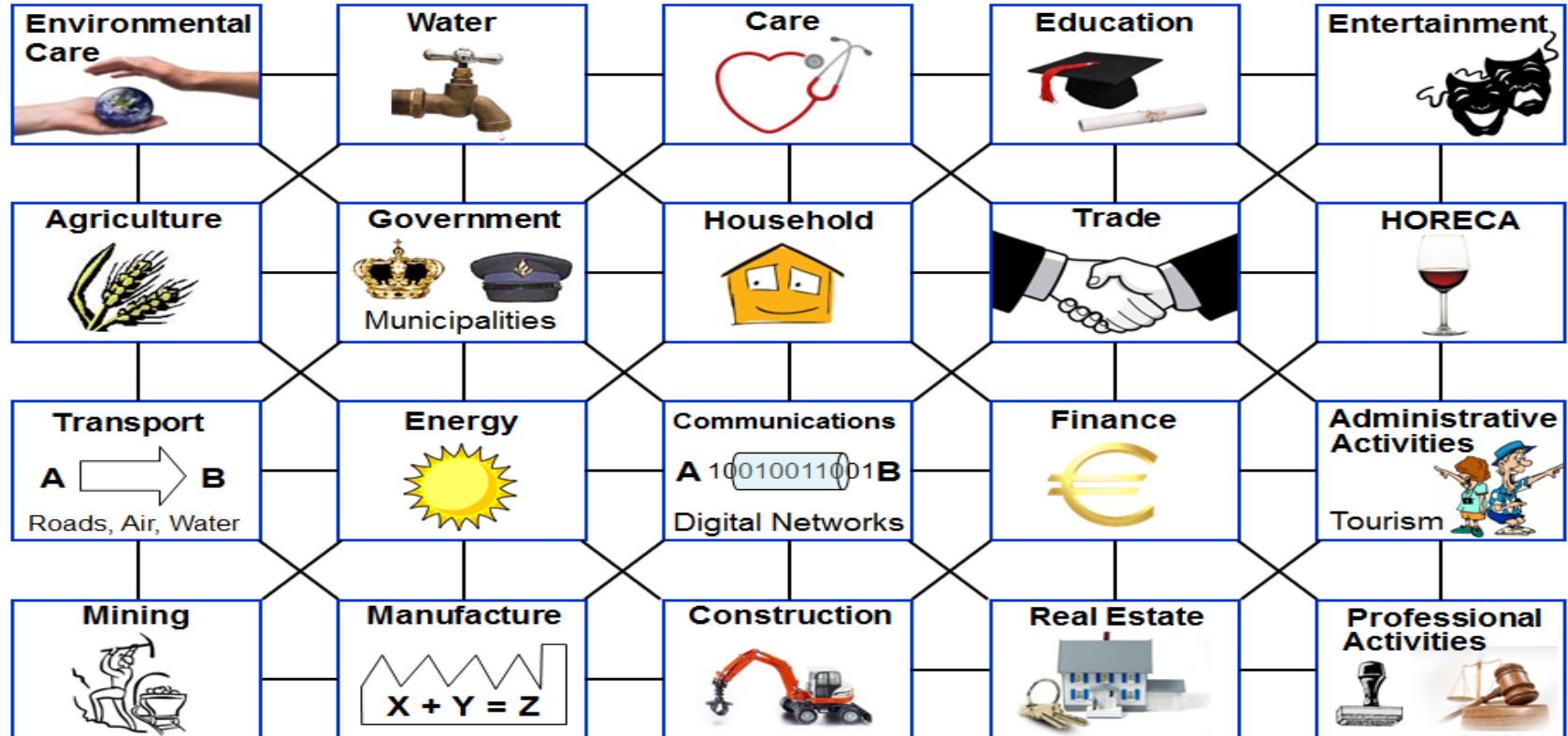
**digital genes of all  
construction elements**





# A complex network of sectors, Whole > $\Sigma$ Parts (sectors)

What does the decomposition, the parts and the wholes look like in other sectors?





# Status Quo Holarchys

Only sustainable innovation leads to new growth

**Prosperity**

**Stagnation**

**Decay**

**The polis,**



The intelligent  
community is...



# Evolution and transition of sectors on the way to healthy holarchies

## Care... Health-Connect

Transition from disease to health management



## Rebuild/Recreate ... Construct-Connect

Transition from archaic to modern construction: Smart Living, digital genomes



## Transport... Transport-Connect

Transition from mono to multi modal: Smart Travelling



## Glaze... Fiber-Connect

Transition to optical bandwidth: NG Smart Networks, Grids



## Value... Value-Connect

Transition to...: **NG Smart Value-Grids**





# Transition to an optical infrastructure (Fiber-Connect): everything will flow towards us



πάντα ρεῖ  
by fibre towards us





Complex ICT (eco)  
systems, IoT







**Rebuilding  
Recreating**

**Construction in  
a new way**

**Sustainable construction  
with inhabitant in driver  
seat**



# Micro and macro cosmos in construction sector



**digital genes of all  
construction elements**





# Everything is known from the digital genes



- **All macro parameters (m<sup>3</sup>, ventilation capacity, energy label, environmental label, etc.)**
- **Renovations can be directly visualized and calculated**



**Construction**  
**Energy**  
**Healthcare**  
**Security**  
...





...it's about  
**humans**  
above all!

...connecting  
for a  
connected  
society





...it's about  
**humans**  
above all!



...connecting  
for a  
connected  
society



**Connecting  
for a  
connected  
society**

**Demand**

Groceries

Car

Driver



**Supply**

Car

Driver

Groceries



**Connecting  
for a  
connected  
society**



Driver

The key:  
connecting  
supply and  
demand



Car

**ICT in and across all sectors**



Groceries

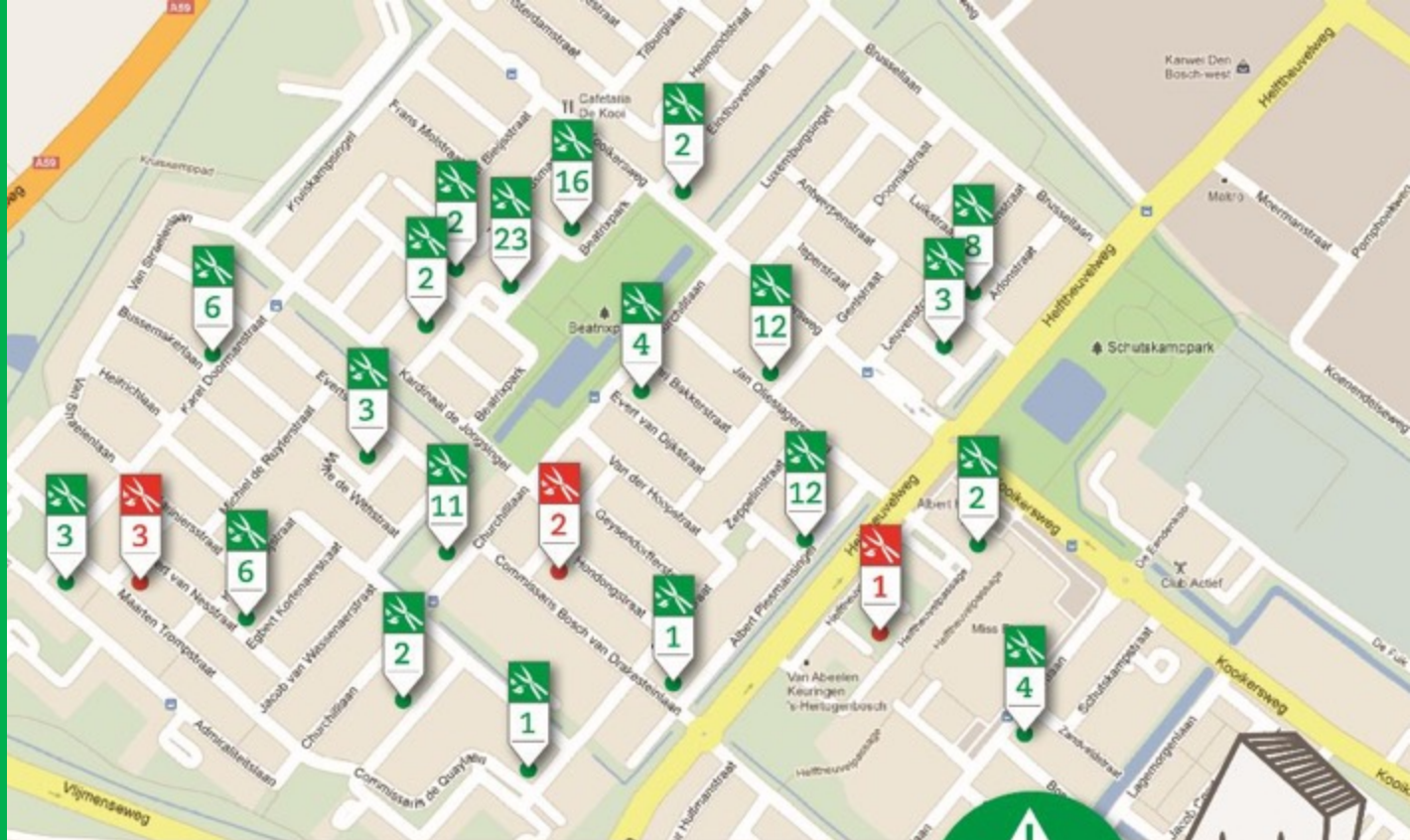


## Connected neighbourhood, district and city...





...it's about **humans**  
above all!



Totaal Buurtsaldo  
**122 Uuro**

Tuinieren  
Hond uitlaten  
Boodschappen  
Stryken

Vraag	Aanbod
6 U <input checked="" type="checkbox"/>	123 U <input checked="" type="checkbox"/>
20 U <input type="checkbox"/>	12 U <input type="checkbox"/>
2 U <input type="checkbox"/>	16 U <input type="checkbox"/>
2 U <input type="checkbox"/>	1 U <input type="checkbox"/>

**Aanbod  
groter dan  
vraag**





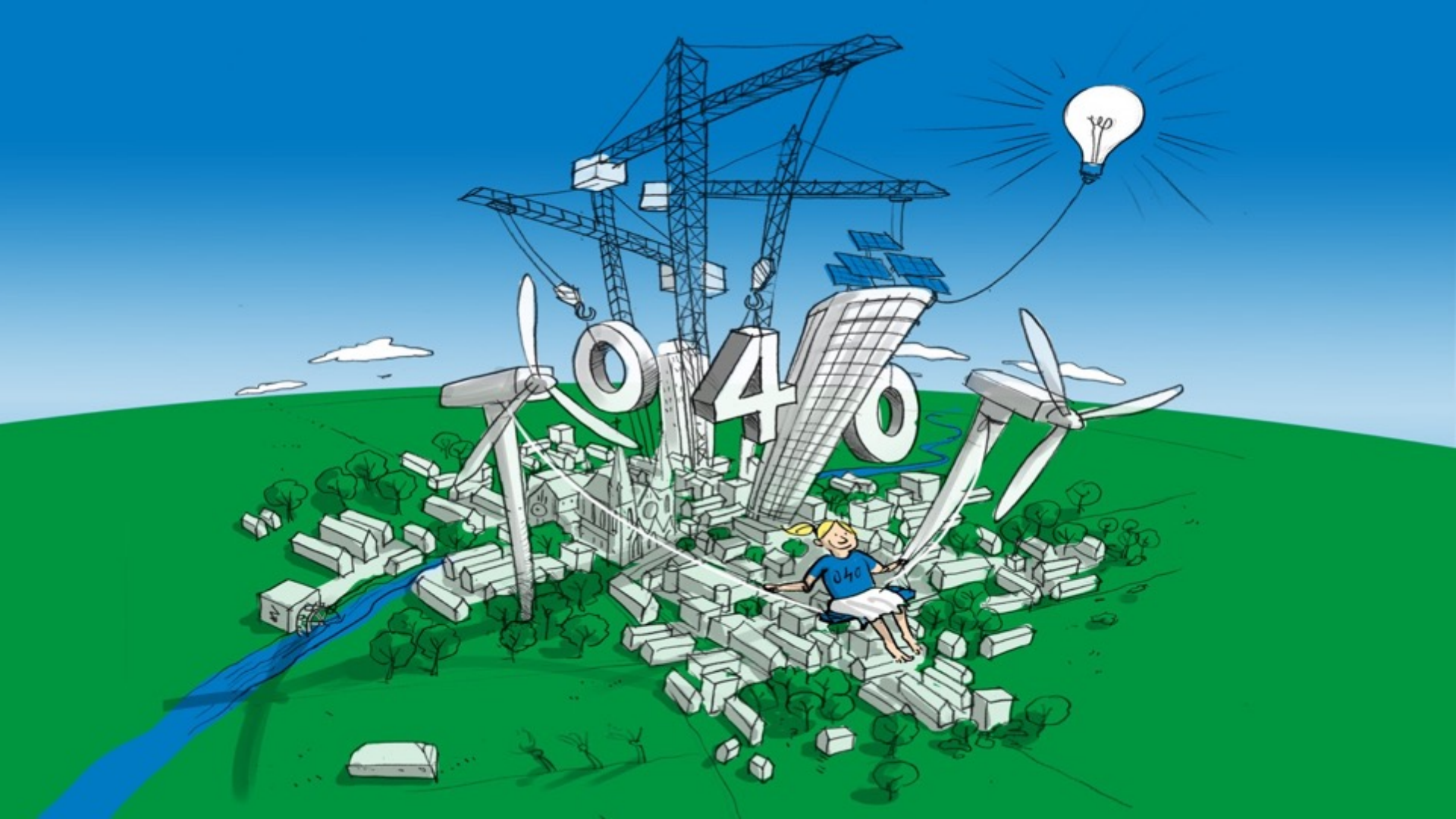


A 4x16 grid of colored arrows representing a sequence of 64 elements. The arrows are colored yellow, green, or blue. The sequence is: Row 1: 16 yellow arrows (D, D, D, D, D, D, C, C, C, C, C, C, C, C, D); Row 2: 16 green arrows (C, B, B, B, B, B, B, B, B, B, B, B, B, B, C); Row 3: 16 green arrows (C, B, B, B, B, B, B, B, B, B, B, B, B, B, C); Row 4: 16 green arrows (D, C, C, C, C, C, C, C, C, C, C, C, C, C, D).

**Handrecht amschleift**

[illegible]







# End goal: all Dutch homes directly under one button!



- Building environment
- Public space
- National -> International
- Construction sector -> trans sectoral
- How?

- **Geno type of NL mapped => map of home**
- **Feno type of NL mapped => map at home**



# Shift happens, from yesterdays' logic to today's logic

Central

Hierarchical control

Linear and incremental

Profit, ownership

Product, construction drawing

End users and silos

Partial rationality

Intra sectoral

Survive

Business case

Operational excellence

Competitors

(Unconscious) part

Determinism (Newton)

Decentral

P2P and self-control

Circular and disruptive

Shared values: PPP + Pneuma

Service, 3D experience from genome

Prosumers and networks

Integral systemic thinking

Intra sectoral and trans sectoral

The good live, cooperate

Value case

Operational and innovative excellence

Co-operative stakeholders

(Conscious) part and whole

Uncertainty (Heisenberg, ESW)

Challenge for  
smart cITy stakeholders

- **Facilitating transition from left to right (mechanism design)**
- **Initiate and learn to work with the digital city genome**



**You can  
only see it,  
once you've  
got it!**

**Johan Cruijff**





**Than  
k you!**

**nico.baken@kpn.com**  
**manifestnicobaken.nl**